

River Walk

APARTMENTS CATALOGUE

LUXURY LIFESTYLE AT THE HEART OF NATURE

River Walk



الموقع

الإليجا

واحة خضراء ومركز للاستجمام، وهي تتمركز على حدود سراييفو، وتتميز بيئتها الطبيعية والمعدنية المختلفة، والمساحات الخضراء الواسعة، مما يجعلها نقطة تركز السياح بمختلف أجناسهم.

تقع الإليجا على سفوح جبل إيجمان، وتضم مناطق سكنية، وتعتبر مركز استجمام معروف، حيث تحتوي على فنادق وشقق فندقية مختلفة.

تضم المنطقة واحدة من أشهر المحميات الطبيعية والتي ينبع منها نهر البوسنة. ويمر من خلال المنطقة نهر جيليزنيتسا والذي يعتبر نقطة الجذب التي يتمركز حولها معظم الفنادق، المطاعم، ومختلف البنايات.

تعتبر منطقة الإليجا المركز الإداري للمناطق السكنية المحيطة بها، وهي متصلة بمركز مدينة سراييفو بطريق رئيسي وسكة للترام، وخطوط نقل داخلية عن طريق الحافلات، وتبعد المنطقة عن الجبال المحيطة بها حوالي 30 دقيقة، وبما أن هذه المنطقة قريبة جدا من الطرقات الرئيسية، فإن الوصول إلى باقي المدن مثل فوينيتسا، يانيتسا وفيسوكو لا يحتاج إلى أكثر من ساعتين بالسيارة.

تتمتع المنطقة بإمكانات تجارية وسياحية كبيرة وواحدة، ومع مرور الوقت وتوجه البوسنة والهرسك إلى دخول الاتحاد الأوروبي وانفتاحها على العالم، نجد هذه البلدية تتجه لتكون أفضل مركز حيوي هام في سراييفو والبوسنة والهرسك سواء كان ذلك سياحيا، ثقافيا، أم تجاريا.

نبذة عن مشروع ريفر ووك

يقع مشروع ريفر ووك في قلب منطقة الإليجا، ويتميز باطلالته المباشرة على نهر جيليزنيتسا، ويقدم المشروع نمطاً جيداً للحياة في بيئة طبيعية رائعة الجمال.

ريفير ووك هو عبارة عن عمارة سكنية تحتوي على: (مواقف للسيارات + طابق أرضي + 10 طوابق) ذات استخدامات متعددة، وتم تصميم المشروع ليوفر أرقى أشكال الحياة اليومية المريحة لقرابه من جميع الخدمات اللازمة، حيث أنه متمركز في قلب منطقة الإليجا، ويبعد عن مطار سراييفو الدولي 5 دقائق فقط بالسيارة، بينما لا يحتاج الوصول إلى الجبال الأولمبية إلى أكثر من 30 دقيقة.

صفات المشروع:

الرقمي والرحابة الداخلية
التصميم المعاصر
الجودة
الراحة

ريفير ووك

سيتم بناء المشروع على أرض مساحتها 6805 م² والواقعة بين نهر جيليزنيتسا وفندق التيرميلنا ريفيرا، وتبلغ مساحة المبنى الإجمالية 28.306 م²، ويحتوي المشروع على طابق تحت أرضي يتسع إلى 162 موقف للسيارات، طابق أرضي تجاري يحتوي على مختلف المطاعم والمقاهي وأماكن للمحلات التجارية، و 10 طوابق من الشقق السكنية بمختلف نماذجها الخمسة.

عدد الطوابق	: 10 طوابق
عدد الشقق	: 159 شقة سكنية
عدد المواقف	: 162 موقف
عدد النماذج المتوفرة	: 5 نماذج
عدد المصاعد	: 5 مصاعد كبيرة

River Walk

LOCATION

GEOGRAPHY

Ilidža is well known to have a pleasant and attractive geography. The city itself is built on fairly level ground, although it is surrounded by olympic mountains. The biggest is mount Bjelašnica, whose 2067 m peak towers above the city.

The Željeznica river, a tributary of the Bosna, passes through the Ilidža center.

The city is very rich in trees and other greenery. The total area of the city's parks is about 50% of Sarajevo area, which has six times its population.

CLIMATE

Climate in this area has mild differences between highs and lows, and there is adequate rainfall year-round.

HISTORY

Ilidža is one of the longest continuously inhabited regions in Bosnia and Herzegovina. Since the 19th century, numerous archeological finds have been made in the Butmir area, dating from Neolithic times. The so-called Butmir culture, is one of the best documented Neolithic cultures in Europe of the 26th and 25th centuries BC.

The modern town of Ilidža as we know it was founded during the Ottoman rule of Bosnia. Its name derives from the Turkish word Ilica, meaning "warm thermal springs". Numerous mosques and bridges were also built at this time.

GENERAL DESIGN

FORM

This project represents an impressively comprehensive approach to site planning, with clear and systematic design strategies. Adaptive use of modern materials in the complex of existing historical object and archeological sites fully respects the architectural and planing matrix.

From the ecological point of view, and the introduction of an optimal cooling and heating system of the building has a major impact on the current ecological situation in BiH as well as in the whole world.

CONCEPT

"ILIDŽA RIVER VIEW" is concept of residential living closely related to untouched nature and it is about to become a part of synergy between new building, nature surrounding and beautiful "Željeznica" river that flow through Ilidža estate provide extraordinary view on water and mountain Igman.

FUNCTION

Our design philosophy follow importance of implementing the most recent high end technology regarding construction materials but being respectful for traditional quality of designing buildings using durable long-lasting materials, and local expert craftsmanship.

MATERIALS

Combining glass, aluminum and high end building material end thermal insulation the building has high level of positive influence on the local micro climate and energy saving.

HEATING AND COOLING

Using the latest modern technology and seriously considering strict European and World standards for protecting climate change, heating and cooling system is performed through hi-tech heat pumps using electrical power. According a detailed study, the selected heating and cooling system proved to be the most economical and energy efficient system.

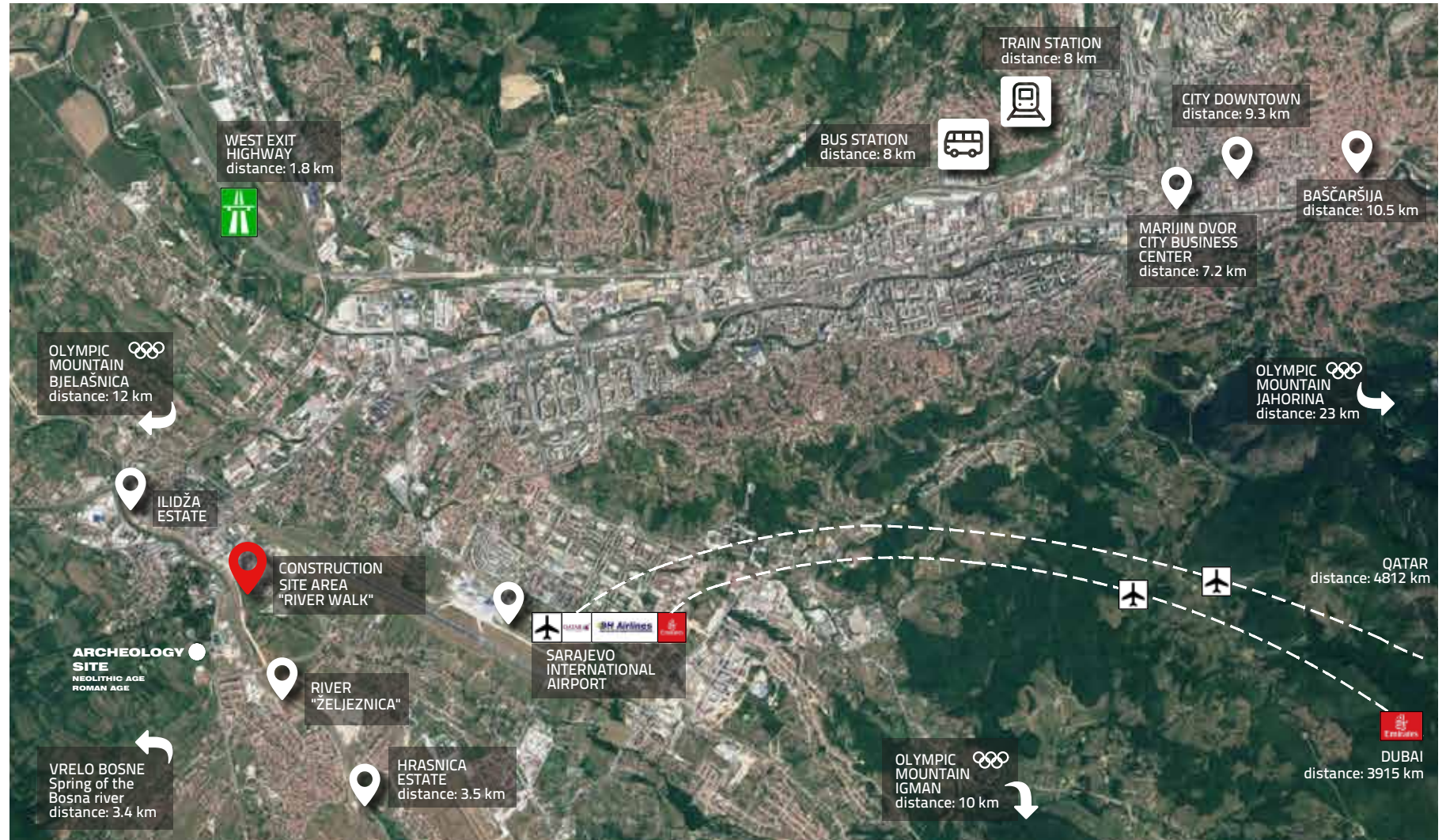


Simplicity is the ultimate sophistication.



River Walk

Master plan - Sarajevo city map



The City of Sarajevo
four municipalities:
Old City, Center, New City
and New Sarajevo
have **297,416** residents

Municipality of Ilidža have
67.937 residents



River Walk



Master plan - Construction site

River Walk





MASTER SITE PLAN

- LUXURIOUS RESTAURANTS
- COFFEE SHOPS
- SPORT FACILITIES
- GYM CLUB - MALE / FEMALE
- SWIMMING POOL
- 162 PARKING SPACES
- 159 APARTMENTS
- GROSS AREA 28.305,50 M²

River Walk 1st FLOOR



- 1 Apartment Type 1
Two bedroom
cca 74 m²

2 Apartment Type 2
Two bedroom
cca 100 m²

2a Apartment Type 2a
Two bedroom
cca 113 m²

2c Apartment Type 2c
Two bedroom
cca 100 m²

3 Apartment Type 3
Studio
47,55 m²
- 4 Apartment Type 4
One bedroom
cca 56,5 m²

5 Apartment Type 5
Two bedroom
cca 89 m²

6 Apartment Type 6
Three bedroom
cca 114 m²

7 Apartment Type 7
Two bedroom
cca 79 m²
- 7a Apartment Type 7a
Two bedroom
cca 77 m²

8 Apartment Type 8
One bedroom
77,86 m²



River Walk 2nd FLOOR



- 1** Apartment Type 1
Two bedroom
cca 74 m²
- 2** Apartment Type 2
Two bedroom
cca 88 m²
- 2a** Apartment Type 2a
Two bedroom
cca 102 m²
- 2b** Apartment Type 2C
Two bedroom
cca 88 m²
- 3** Apartment Type 3
Studio
cca 47,5 m²
- 4** Apartment Type 4
One bedroom
cca 56,5 m²
- 5** Apartment Type 5
Two bedroom
cca 89 m²
- 6** Apartment Type 6
Three bedroom
cca 114 m²
- 7** Apartment Type 7
Two bedroom
cca 79 m²
- 7a** Apartment Type 7a
Two bedroom
cca 77 m²
- 8** Apartment Type 8
One bedroom
cca 71 m²





- 1** Apartment Type 1
Two bedroom
cca 74 m²
- 2** Apartment Type 2
Two bedroom
cca 88 m²
- 2a** Apartment Type 2a
Two bedroom
cca 102 m²
- 2b** Apartment Type 2C
Two bedroom
cca 88 m²
- 3** Apartment Type 3
Studio
cca 47,5 m²
- 4** Apartment Type 4
One bedroom
cca 56,5 m²
- 5** Apartment Type 5
Two bedroom
cca 89 m²
- 6** Apartment Type 6
Three bedroom
cca 114 m²
- 7** Apartment Type 7
Two bedroom
cca 79 m²
- 7a** Apartment Type 7a
Two bedroom
cca 77 m²
- 8** Apartment Type 8
One bedroom
cca 71 m²



River Walk 4th FLOOR



- 1** Apartment Type 1
Two bedroom
cca 74 m²

2 Apartment Type 2
Two bedroom
cca 88 m²

2a Apartment Type 2a
Two bedroom
cca 102 m²

2c Apartment Type 2c
Two bedroom
cca 88 m²

3 Apartment Type 3
Studio
cca 47,5 m²
- 4** Apartment Type 4
One bedroom
cca 56,5 m²

5 Apartment Type 5
Two bedroom
cca 89 m²

6 Apartment Type 6
Three bedroom
cca 114 m²
- 7** Apartment Type 7
Two bedroom
cca 79 m²

7a Apartment Type 7a
Two bedroom
cca 77 m²

8 Apartment Type 8
One bedroom
cca 71 m²



River Walk 5th FLOOR



- | | | |
|--|--|--|
| <p>1 Apartment Type 1
Two bedroom
cca 74 m²</p> | <p>6 Apartment Type 6
Three bedroom
cca 114 m²</p> | <p>8 Apartment Type 8
One bedroom
cca 72 m²</p> |
| <p>2 Apartment Type 2
Two bedroom
cca 100 m²</p> | <p>7 Apartment Type 7
Two bedroom
cca 79 m²</p> | <p>9 Apartment Type 9
Three bedroom
cca 132,5 m²</p> |
| <p>2a Apartment Type 2a
Two bedroom
cca 102 m²</p> | <p>7a Apartment Type 7a
Two bedroom
cca 77 m²</p> | <p>10 Apartment Type 10
Two bedroom
cca 123 m²</p> |
| <p>3 Apartment Type 3
Studio
cca 47,5 m²</p> | | |



River Walk 6th FLOOR



- | | | |
|--|--|--|
| <p>1 Apartment Type 1
Two bedroom
cca 74 m²</p> | <p>7 Apartment Type 7
Two bedroom
cca 79 m²</p> | <p>10 Apartment Type 10
Two bedroom
cca 118 m²</p> |
| <p>2 Apartment Type 2
Two bedroom
cca 88 m²</p> | <p>7a Apartment Type 7a
Two bedroom
cca 77 m²</p> | <p>11 Apartment Type 11
Three bedroom
cca 123 m²</p> |
| <p>2a Apartment Type 2a
Two bedroom
cca 102 m²</p> | <p>8 Apartment Type 8
One bedroom
cca 72 m²</p> | <p>12 Apartment Type 12
Three bedroom
cca 118 m²</p> |
| <p>3 Apartment Type 3
Studio
cca 47,5 m²</p> | <p>9 Apartment Type 9
Three bedroom
cca 132,5 m²</p> | |







- 1** Apartment Type 1
Two bedroom
cca 74 m²

2 Apartment Type 2
Two bedroom
cca 88 m²

2a Apartment Type 2a
Two bedroom
cca 102 m²

3 Apartment Type 3
Studio
cca 47,5 m²
- 7** Apartment Type 7
Two bedroom
cca 79 m²

7a Apartment Type 7a
Two bedroom
cca 77 m²

8 Apartment Type 8
One bedroom
cca 72 m²
- D1** Apartment Type Duplex 1
8th&9th floor
cca 71 m²

D2 Apartment Type Duplex 2
8th&9th floor
cca 79 m²

D3 Apartment Type Duplex 3
8th&9th floor
cca 169 m²





- 1** Apartment Type 1
Two bedroom
cca 74 m²
- 2** Apartment Type 2
Two bedroom
cca 88 m²
- 2a** Apartment Type 2a
Two bedroom
cca 102 m²
- 3** Apartment Type 3
Studio
cca 47,5 m²
- 7** Apartment Type 7
Two bedroom
cca 79 m²
- 7a** Apartment Type 7a
Two bedroom
cca 77 m²
- 8** Apartment Type 8
One bedroom
cca 72 m²
- D1** Apartment Type Duplex 1
8th&9th floor
cca 71 m²
- D2** Apartment Type Duplex 2
8th&9th floor
cca 79 m²
- D3** Apartment Type Duplex 3
8th&9th floor
cca 169 m²



River Walk 10th FLOOR

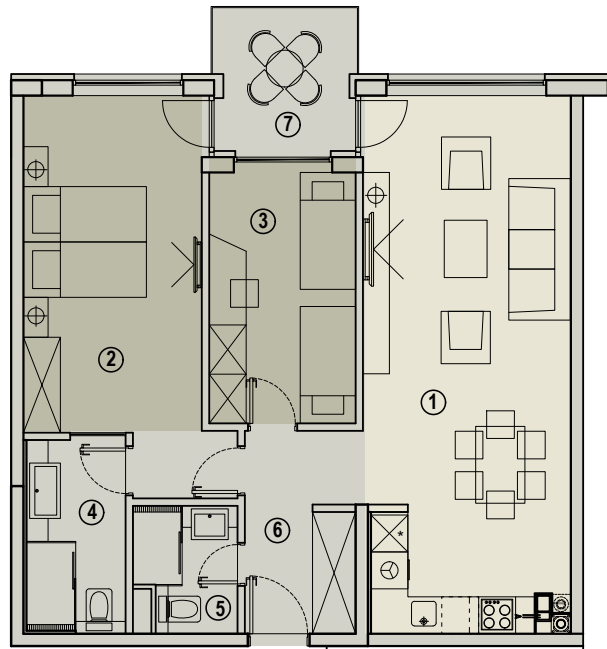


- 1 Apartment Type 1
Two bedroom
cca 74 m²
- 2 Apartment Type 2
Two bedroom
cca 88 m²
- 2a Apartment Type 2a
Two bedroom
cca 102 m²
- 3 Apartment Type 3
Studio
cca 47,5 m²
- 7 Apartment Type 7
Two bedroom
cca 79 m²
- 7a Apartment Type 7a
Two bedroom
cca 77 m²
- 8 Apartment Type 8
One bedroom
cca 72 m²
- 13 Apartment Type 13
Three bedroom
cca 130 m²
- 14 Apartment Type 14
Two bedroom
cca 118 m²



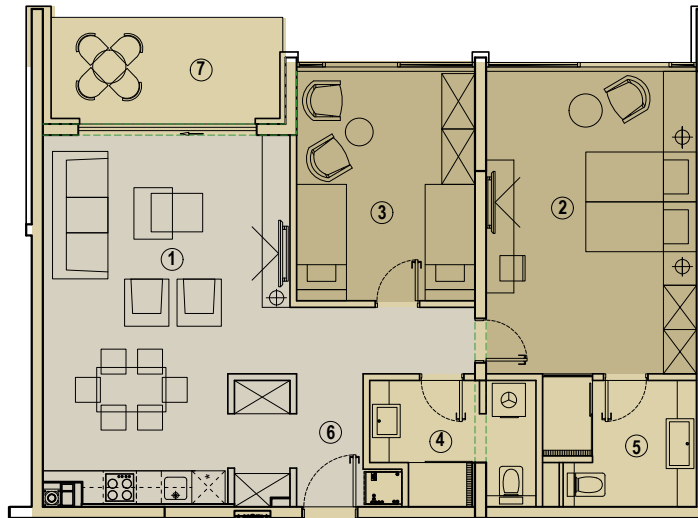


Apartment Type 1
Two bedroom Apartment
Total Sqm 74



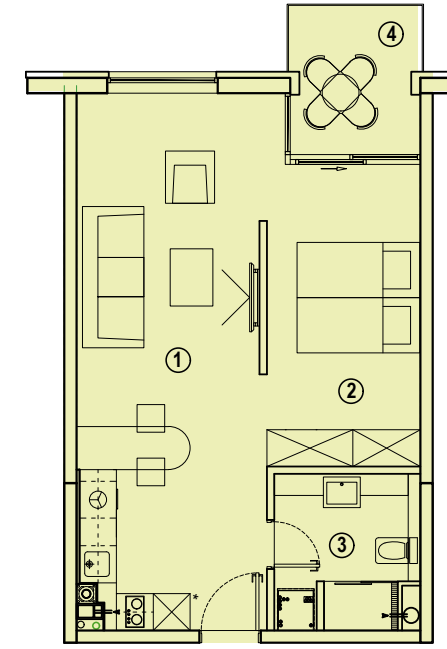
- | | | |
|----|---------------------------------|--|
| 1. | DINNING + LIVING ROOM + KITCHEN | A= 28.98m ² |
| 2. | BEDROOM | A= 17.85m ² |
| 3. | ROOM | A= 9.98m ² |
| 4. | BATHROOM | A= 4.93m ² |
| 5. | BATHROOM | A= 3.08m ² |
| 6. | HALLWAY | A= 5.99m ² |
| 7. | BALCONY | A=2.55m ² x0.50+2.93m ² x0.75=3.47m ² |

Apartment Type 2
Two bedroom Apartment
Total Sqm 88



- | | | |
|----|---------------------------------|---|
| 1. | DINNING + LIVING ROOM + KITCHEN | A= 26.78m ² |
| 2. | BEDROOM | A= 20.75m ² |
| 3. | ROOM | A= 13.33m ² |
| 4. | BATHROOM | A= 5.84m ² |
| 5. | BATHROOM | A= 5.83m ² |
| 6. | HALLWAY | A= 9.83m ² |
| 7. | LOGGIA | A=7.91m ² x0.75=5.93m ² |

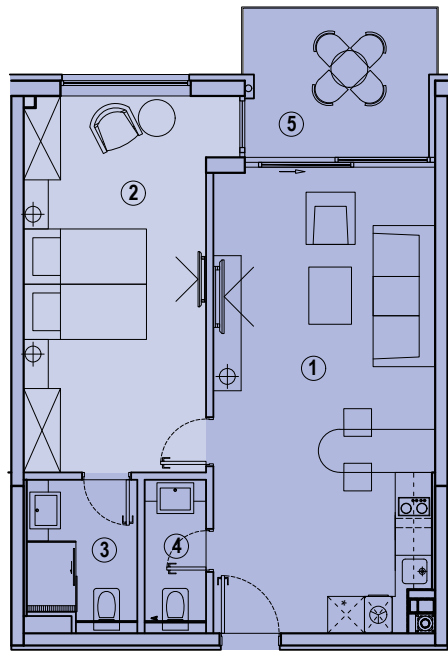
Apartment Type 3
Studio Apartment
Total Sqm 47,55



- | | | |
|----|---------------------------------|--|
| 1. | DINNING + LIVING ROOM + KITCHEN | A= 26.90m ² |
| 2. | BEDROOM | A= 12.16m ² |
| 3. | BATHROOM | A= 5.33m ² |
| 4. | BALCONY | A=2.32m ² x0.50+2.66m ² x0.75=3.16m ² |

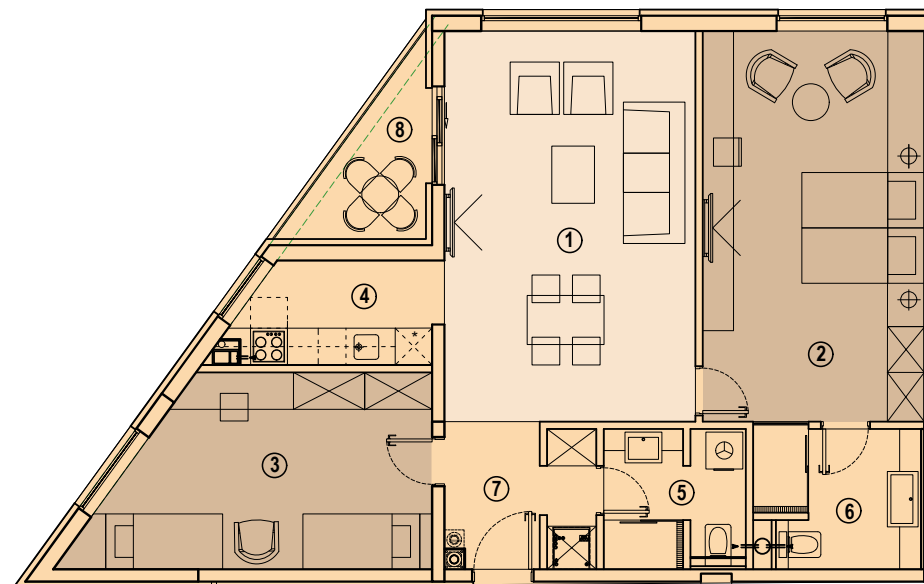


Apartment Type 4
One bedroom Apartment
 Total Sqm 56,5



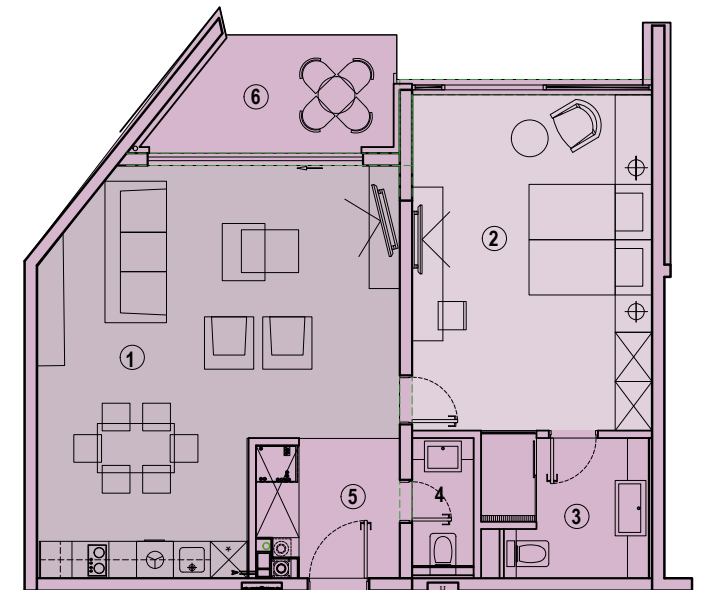
- | | | |
|----|---------------------------------|---|
| 1. | DINNING + LIVING ROOM + KITCHEN | A= 26.87m ² |
| 2. | BEDROOM | A= 18.71m ² |
| 3. | BATHROOM | A= 4.02m ² |
| 4. | TOILET | A= 2.30m ² |
| 5. | BALCONY | A=4.41m ² x0.5+3.92m ² x0.75=4.65m ² |

Apartment Type 5
Two bedroom Apartment
 Total Sqm 89



- | | | |
|----|-----------------------|--------------------------------|
| 1. | DINNING + LIVING ROOM | A= 25.97m ² |
| 2. | BEDROOM | A= 22.86m ² |
| 3. | ROOM | A= 15.99m ² |
| 4. | KITCHEN | A= 5.33m ² |
| 5. | BATHROOM | A= 4.92m ² |
| 6. | BATHROOM | A= 5.72m ² |
| 7. | HALLWAY | A= 5.52m ² |
| 8. | LOGGIA | A=3.96x0.75=2.97m ² |

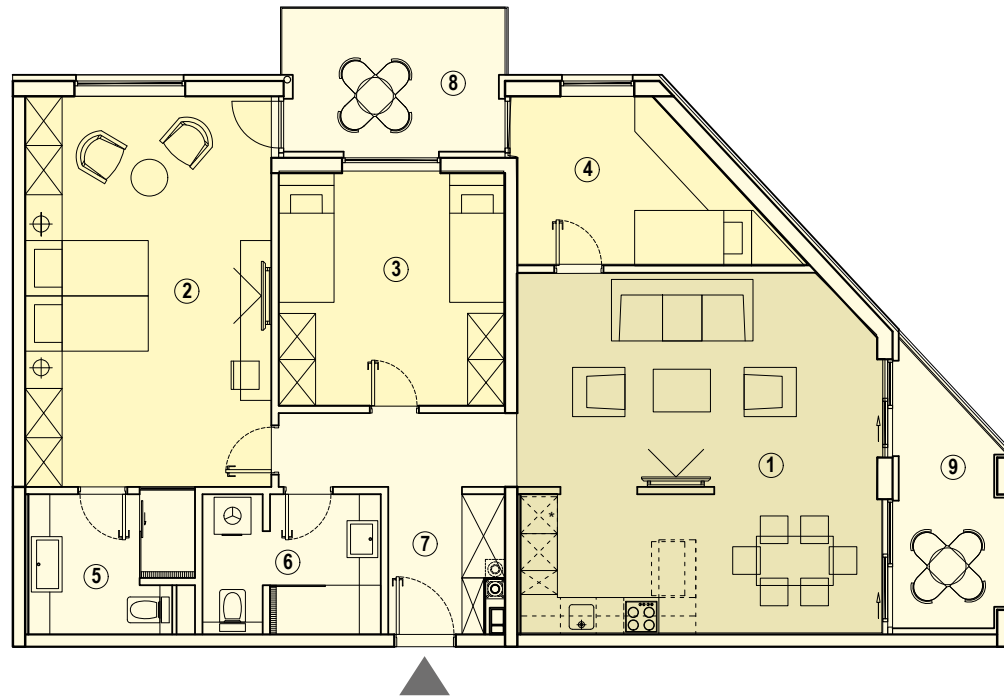
Apartment Type 8
One bedroom Apartment
 Total Sqm 72



- | | | |
|----|---------------------------------|---|
| 1. | DINNING + LIVING ROOM + KITCHEN | A= 32.93m ² |
| 2. | BEDROOM | A= 21.29m ² |
| 3. | BATHROOM | A= 5.70m ² |
| 4. | TOILET | A= 2.08m ² |
| 5. | HALLWAY | A= 4.93m ² |
| 6. | LOGGIA | A=6.53m ² x0.75=4.89m ² |

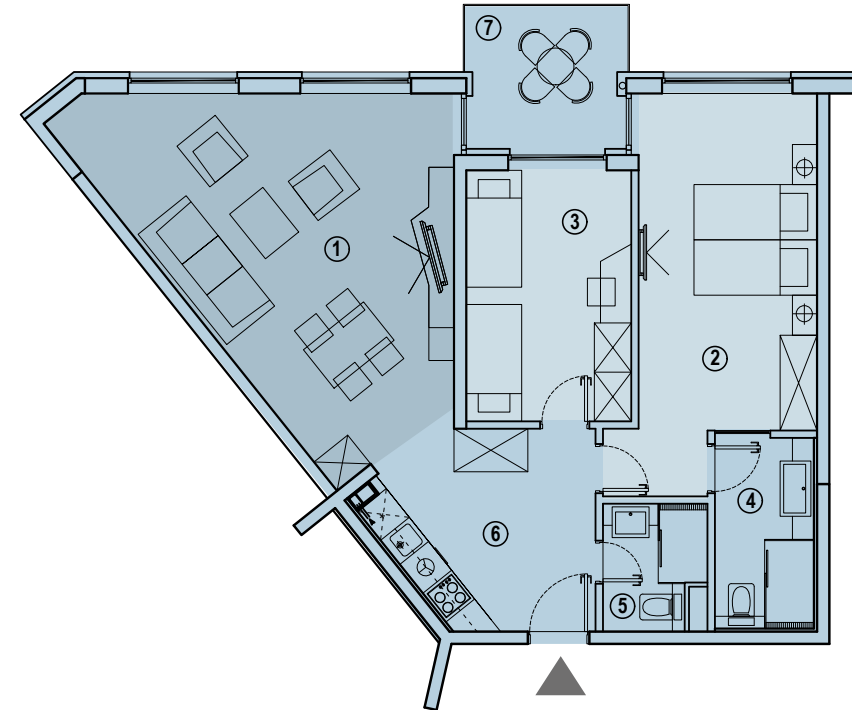


Apartment Type 6
Three bedroom Apartment
 Total Sqm 114



- | | | |
|----|---------------------------------|--|
| 1. | DINNING + LIVING ROOM + KITCHEN | A= 34.11m ² |
| 2. | BEDROOM | A= 25.52m ² |
| 3. | ROOM | A= 14.18m ² |
| 4. | ROOM | A= 9.68m ² |
| 5. | BATHROOM | A= 5.68m ² |
| 6. | BATHROOM | A= 6.25m ² |
| 7. | HALLWAY | A= 8.58m ² |
| 8. | BALCONY | A=3.87m ² x0.50+4.58m ² x0.75=5.37m ² |
| 9. | LOGGIA | A=5.88m ² x0.75=4.41m ² |

Apartment Type 7
Two bedroom Apartment
 Total Sqm 79



- | | | |
|----|-----------------------|--|
| 1. | DINNING + LIVING ROOM | A= 27.76m ² |
| 2. | BEDROOM | A= 17.85m ² |
| 3. | ROOM | A= 11.21m ² |
| 4. | BATHROOM | A= 4.89m ² |
| 5. | BATHROOM | A= 3.08m ² |
| 6. | HALLWAY + KITCHEN | A= 10.52m ² |
| 7. | BALCONY | A=2.87m ² x0.50+3.31m ² x0.75=3.91m ² |



Apartments Index

Apt. No. FLOOR 1

101	Apartment	86,31 m ²
	Deep set balcony	2,97 m ²
	Total	89,28 m ²
102	Apartment	44,39 m ²
	Balcony	3,16 m ²
	Total	47,55 m ²
103	Apartment	70,81 m ²
	Balcony	3,47 m ²
	Total	74,28 m ²
104	Apartment	70,86 m ²
	Balcony	3,47 m ²
	Total	74,33 m ²
105	Apartment	73,09 m ²
	Balcony	3,90 m ²
	Total	76,99 m ²
106	Apartment	75,31 m ²
	Balcony	3,92 m ²
	Total	79,23 m ²
107	Apartment	70,82 m ²
	Balcony	3,47 m ²
	Total	74,29 m ²
108	Apartment	70,70 m ²
	Balcony	3,47 m ²
	Total	74,17 m ²
109	Apartment	70,86 m ²
	Balcony	3,47 m ²
	Total	74,33 m ²
110	Apartment	43,93 m ²
	Balcony	3,44 m ²
	Total	47,37 m ²
111	Apartment	51,89 m ²
	Balcony	4,65 m ²
	Total	56,54 m ²
112	Apartment	104,00 m ²
	Balcony/ Deep set balcony	9,78 m ²
	Total	113,78 m ²
113	Apartment	87,73 m ²
	Terrace	12,50 m ²
	Total	100,23 m ²
114	Apartment	87,64 m ²
	Terrace	12,61 m ²
	Total	100,25 m ²
115	Apartment	87,55 m ²
	Terrace	12,64 m ²
	Total	100,19 m ²
116	Apartment	101,88 m ²
	Terrace	11,02 m ²
	Total	112,90 m ²
117	Apartment	71,69 m ²
	Terrace	6,17 m ²
	Total	77,86 m ²

118	Apartment	87,49 m ²
	Terrace	12,61 m ²
	Total	100,10 m ²

119	Apartment	87,56 m ²
	Terrace	12,50 m ²
	Total	

Apt. No. FLOOR 2

201	Apartment	86,31 m ²
	Deep set balcony	2,97 m ²
	Total	89,28 m ²

202	Apartment	44,39 m ²
	Balcony	3,16 m ²
	Total	47,55 m ²

203	Apartment	70,81 m ²
	Balcony	3,47 m ²
	Total	74,28 m ²

204	Apartment	70,86 m ²
	Balcony	3,47 m ²
	Total	74,33 m ²

205	Apartment	73,09 m ²
	Balcony	3,90 m ²
	Total	76,99 m ²

206	Apartment	75,31 m ²
	Balcony	3,92 m ²
	Total	79,23 m ²

207	Apartment	70,82 m ²
	Balcony	3,47 m ²
	Total	74,29 m ²

208	Apartment	70,70 m ²
	Balcony	3,47 m ²
	Total	74,17 m ²

209	Apartment	70,86 m ²
	Balcony	3,47 m ²
	Total	74,33 m ²

210	Apartment	43,93 m ²
	Balcony	3,44 m ²
	Total	47,37 m ²

211	Apartment	51,89 m ²
	Balcony	4,65 m ²
	Total	56,54 m ²

212	Apartment	104,00 m ²
	Balcony/ Deep set balcony	9,78 m ²
	Total	113,78 m ²

213	Apartment	82,61 m ²
	Deep set balcony	5,96 m ²
	Total	88,57 m ²

214	Apartment	82,52 m ²
	Deep set balcony	5,84 m ²
	Total	88,36 m ²

215	Apartment	82,67 m ²
	Deep set balcony	5,84 m ²
	Total	88,51 m ²

216	Apartment	97,00 m ²
	Deep set balcony	5,38 m ²
	Total	102,38 m ²

217	Apartment	66,93 m ²
	Deep set balcony	4,89 m ²
	Total	71,82 m ²

218	Apartment	82,36 m ²
	Deep set balcony	5,84 m ²
	Total	88,20 m ²

219	Apartment	82,43 m ²
	Deep set balcony	5,96 m ²
	Total	88,39 m ²

Apt. No. FLOOR 3

301	Apartment	86,31 m ²
	Deep set balcony	2,97 m ²
	Total	89,28 m ²

302	Apartment	44,39 m ²
	Balcony	3,16 m ²
	Total	47,55 m ²

303	Apartment	70,81 m ²
	Balcony	3,47 m ²
	Total	74,28 m ²

304	Apartment	70,86 m ²
	Balcony	3,47 m ²
	Total	74,33 m ²

305	Apartment	73,09 m ²
	Balcony	3,90 m ²
	Total	76,99 m ²

306	Apartment	75,31 m ²
	Balcony	3,92 m ²
	Total	79,23 m ²

307	Apartment	70,82 m ²
	Balcony	3,47 m ²
	Total	74,29 m ²

308	Apartment	70,70 m ²
	Balcony	3,47 m ²
	Total	74,17 m ²

309	Apartment	70,86 m ²
	Balcony	3,47 m ²
	Total	74,33 m ²

310	Apartment	43,93 m ²
	Balcony	3,44 m ²
	Total	47,37 m ²

311	Apartment	51,89 m ²
	Balcony	4,65 m ²
	Total	56,54 m ²

312	Apartment	104,00 m ²
	Balcony/ Deep set balcony	9,78 m ²
	Total	113,78 m ²

313	Apartment	82,61 m ²
	Deep set balcony	5,96 m ²
	Total	88,57 m ²

314	Apartment	82,52 m ²
	Deep set balcony	5,84 m ²
	Total	88,36 m ²

315	Apartment	82,67 m ²
	Deep set balcony	5,84 m ²
	Total	88,51 m ²

316	Apartment	97,00 m ²
	Deep set balcony	5,38 m ²
	Total	102,38 m ²

317	Apartment	66,93 m ²
	Deep set balcony	4,89 m ²
	Total	71,82 m ²

318	Apartment	82,36 m ²
	Deep set balcony	5,84 m ²
	Total	88,20 m ²

319	Apartment	82,43 m ²
	Deep set balcony	5,96 m ²
	Total	88,39 m ²

Apt. No. FLOOR 4

401	Apartment	86,31 m ²
	Deep set balcony	2,97 m ²
	Total	89,28 m ²

402	Apartment	44,39 m ²
	Balcony	3,16 m ²
	Total	47,55 m ²

403	Apartment	70,81 m ²
	Balcony	3,47 m ²
	Total	74,28 m ²

404	Apartment	70,86 m ²
	Balcony	3,47 m ²
	Total	74,33 m ²

405	Apartment	73,09 m ²
	Balcony	3,90 m ²
	Total	76,99 m ²

406	Apartment	75,31 m ²
	Balcony	3,92 m ²
	Total	79,23 m ²

407	Apartment	70,82 m ²
	Balcony	3,47 m ²
	Total	74,29 m ²

408	Apartment	70,70 m ²
	Balcony	3,47 m ²
	Total	74,17 m ²

409	Apartment	70,86 m ²
	Balcony	3,47 m ²
	Total	74,33 m ²

410	Apartment	43,93 m ²
	Balcony	3,44 m ²
	Total	47,37 m ²

411	Apartment	51,89 m ²
	Balcony	4,65 m ²
	Total	56,54 m ²

412	Apartment	104,00 m ²
	Balcony/ Deep set balcony	9,78 m ²
	Total	113,78 m ²

413	Apartment	82,61 m ²
	Deep set balcony	5,96 m ²
	Total	88,57 m ²

414	Apartment	82,52 m ²
	Deep set balcony	5,84 m ²
	Total	88,36 m ²

415	Apartment	82,67 m ²
	Deep set balcony	5,84 m ²
	Total	88,51 m ²

416	Apartment	97,00 m ²
	Deep set balcony	5,38 m ²
	Total	102,38 m ²

417	Apartment	66,93 m ²
	Deep set balcony	4,89 m ²
	Total	71,82 m ²

418	Apartment	82,36 m ²
	Deep set balcony	5,84 m ²
	Total	88,20 m ²

419	Apartment	82,43 m ²
	Deep set balcony	5,96 m ²
	Total	88,39 m ²

Apt. No. FLOOR 5

501	Apartment	110,25 m ²
	Balcony & Terrace	12,60 m ²
	Total	122,85 m ²

502	Apartment	70,81 m ²
	Balcony	3,47 m ²
	Total	74,28 m ²

503	Apartment	70,86 m ²
	Balcony	3,47 m ²
	Total	74,33 m ²

504	Apartment	73,09 m ²
	Balcony	3,90 m ²
	Total	76,99 m ²

505	Apartment	75,31 m ²
	Balcony	3,91 m ²
	Total	79,22 m ²

River Walk

Apartments Index

510	Apartment	117,31 m ²
	Balcony & terrace	20,51 m ²
	Total	137,82 m²
511	Apartment	111,91 m ²
	Balcony & terrace	21,01 m ²
	Total	132,92 m²
512	Apartment	82,67 m ²
	Deep set balcony	5,84 m ²
	Total	88,51 m²
513	Apartment	97,00 m ²
	Deep set balcony	5,38 m ²
	Total	102,38 m²
514	Apartment	66,93 m ²
	Deep set balcony	4,89 m ²
	Total	71,82 m²
515	Apartment	111,68 m ²
	Deep set balcony	21,01 m ²
	& terrace	
	Total	132,69 m²
Apt. No. FLOOR 6		
601	Apartment	106,29 m ²
	Balcony	7,52 m ²
	Total	113,81 m²
602	Apartment	70,72 m ²
	Balcony	3,47 m ²
	Total	74,19 m²
603	Apartment	70,75 m ²
	Balcony	3,47 m ²
	Total	74,22 m²
604	Apartment	73,09 m ²
	Balcony	3,90 m ²
	Total	76,99 m²
605	Apartment	75,31 m ²
	Balcony	3,91 m ²
	Total	79,22 m²
606	Apartment	70,71 m ²
	Balcony	3,47 m ²
	Total	74,18 m²
607	Apartment	70,59 m ²
	Balcony	3,47 m ²
	Total	74,06 m²
608	Apartment	70,75 m ²
	Balcony	3,47 m ²
	Total	74,22 m²
609	Apartment	43,93 m ²
	Balcony	3,44 m ²
	Total	47,37 m²
610	Apartment	112,96 m ²
	Balcony	10,06 m ²
	Total	123,02 m²
611	Apartment	107,48 m ²
	Deep set balcony	11,02 m ²
	Total	118,50 m²

612	Apartment	82,55 m ²
	Deep set balcony	5,84 m ²
	Total	88,39 m²
613	Apartment	96,87 m ²
	Deep set balcony	5,38 m ²
	Total	102,25 m²
614	Apartment	66,79 m ²
	Deep set balcony	4,89 m ²
	Total	71,68 m²
615	Apartment	107,35 m ²
	Deep set balcony	11,01 m ²
	Total	118,36 m²
Apt. No. FLOOR 7		
701	Apartment	106,29 m ²
	Balcony	7,52 m ²
	Total	113,81 m²
702	Apartment	70,72 m ²
	Balcony	3,47 m ²
	Total	74,19 m²
703	Apartment	70,75 m ²
	Balcony	3,47 m ²
	Total	74,22 m²
704	Apartment	73,09 m ²
	Balcony	3,90 m ²
	Total	76,99 m²
705	Apartment	75,31 m ²
	Balcony	3,91 m ²
	Total	79,22 m²
706	Apartment	70,71 m ²
	Balcony	3,47 m ²
	Total	74,18 m²
707	Apartment	70,59 m ²
	Balcony	3,47 m ²
	Total	74,06 m²
708	Apartment	70,75 m ²
	Balcony	3,47 m ²
	Total	74,22 m²
709	Apartment	43,93 m ²
	Balcony	3,44 m ²
	Total	47,37 m²
710	Apartment	112,96 m ²
	Balcony & terrace	10,06 m ²
	Total	123,02 m²
711	Apartment	107,48 m ²
	Deep set balcony	11,02 m ²
	Total	118,50 m²
712	Apartment	82,55 m ²
	Deep set balcony	5,84 m ²
	Total	88,39 m²
713	Apartment	96,87 m ²
	Deep set balcony	5,38 m ²
	Total	102,25 m²

714	Apartment	66,79 m ²
	Deep set balcony	4,89 m ²
	Total	71,68 m²
715	Apartment	107,35 m ²
	Deep set balcony	11,01 m ²
	Total	118,36 m²
Apt. No. FLOOR 8		
801	Duplex Apartment - part on 8th floor	51,36 m ²
	Terrace	19,78 m ²
	Total	71,14 m²
802	Apartment	70,72 m ²
	Balcony	3,47 m ²
	Total	74,19 m²
803	Apartment	70,75 m ²
	Balcony	3,47 m ²
	Total	74,22 m²
804	Apartment	73,09 m ²
	Balcony	3,90 m ²
	Total	76,99 m²
805	Apartment	75,31 m ²
	Balcony	3,91 m ²
	Total	79,22 m²
806	Apartment	70,71 m ²
	Balcony	3,47 m ²
	Total	74,18 m²
807	Apartment	70,59 m ²
	Balcony	3,47 m ²
	Total	74,06 m²
808	Apartment	70,75 m ²
	Balcony	3,47 m ²
	Total	74,22 m²
809	Apartment	43,93 m ²
	Balcony	3,44 m ²
	Total	47,37 m²
810	Duplex Apartment - part on 8th floor	132,89 m ²
	Terrace	35,72 m ²
	Total	168,61 m²
811	Apartment	82,55 m ²
	Deep set balcony	5,84 m ²
	Total	88,39 m²
812	Apartment	96,87 m ²
	Deep set balcony	5,38 m ²
	Total	102,25 m²
813	Apartment	66,79 m ²
	Deep set balcony	4,89 m ²
	Total	71,68 m²
814	Duplex Apartment - Part on 8th floor	63,43 m ²
	Terrace	15,97 m ²
	Total	79,40 m²

Apt. No. FLOOR 9		
801	Duplex Apartment - Part on 9th floor	48,29 m ²
		48,29 m ²
814	Duplex Apartment - Part on 9th floor	59,57 m ²
		59,57 m ²
810	Duplex Apartment - Part on 9th floor	90,69 m ²
		90,69 m ²
901	Apartment	70,72 m ²
	Balcony	3,47 m ²
	Total	74,19 m²
902	Apartment	70,75 m ²
	Balcony	3,47 m ²
	Total	74,22 m²
903	Apartment	73,09 m ²
	Balcony	3,90 m ²
	Total	76,99 m²
904	Apartment	75,31 m ²
	Balcony	3,91 m ²
	Total	79,22 m²
905	Apartment	70,71 m ²
	Balcony	3,47 m ²
	Total	74,18 m²
906	Apartment	70,59 m ²
	Balcony	3,47 m ²
	Total	74,06 m²
907	Apartment	70,75 m ²
	Balcony	3,47 m ²
	Total	74,22 m²
908	Apartment	43,93 m ²
	Balcony	3,44 m ²
	Total	47,37 m²
909	Apartment	82,55 m ²
	Deep set balcony	5,84 m ²
	Total	88,39 m²
910	Apartment	96,87 m ²
	Deep set balcony	5,38 m ²
	Total	102,25 m²
911	Apartment	66,79 m ²
	Deep set balcony	4,89 m ²
	Total	71,68 m²
Apt. No. FLOOR 10		
1001	Apartment	112,15 m ²
	Deep set balcony	5,87 m ²
	Total	118,02 m²
1002	Apartment	70,72 m ²
	Balcony	3,47 m ²
	Total	74,19 m²

1003	Apartment	70,75 m ²
	Balcony	3,47 m ²
	Total	74,22 m²
1004	Apartment	73,09 m ²
	Balcony	3,90 m ²
	Total	76,99 m²
1005	Apartment	75,31 m ²
	Balcony	3,91 m ²
	Total	79,22 m²
1006	Apartment	70,71 m ²
	Balcony	3,47 m ²
	Total	74,18 m²
1007	Apartment	70,59 m ²
	Balcony	3,47 m ²
	Total	74,06 m²
1008	Apartment	70,75 m ²
	Balcony	3,47 m ²
	Total	74,22 m²
1009	Apartment	43,93 m ²
	Balcony	3,44 m ²
	Total	47,37 m²
1010	Apartment	119,42 m ²
	Balcony & deep set balcony	10,52 m ²
	Total	129,94 m²
1011	Apartment	82,55 m ²
	Deep set balcony	5,84 m ²
	Total	88,39 m²
1012	Apartment	96,87 m ²
	Deep set balcony	5,38 m ²
	Total	102,25 m²
1013	Apartment	66,79 m ²
	Deep set balcony	4,89 m ²
	Total	71,68 m²



River Walk

Offers Luxury Lifestyle

At The Heart Of Nature



Bahrain office:
0097317780898

Company e-mail:
marzooqgroup@gmail.com

Bosnia mobile:
00 387 63 662 444; 00 387 63 886 111

Address Sarajevo:
SENABIL d.o.o
Ilidža 71210
Ulica Dr. Mustafe Pintola broj 31